

# NQVPD2JS

## THREE PHASE MULTIFUNCTION V/A PROTECTOR

### Adjustable Power Protector Instruction Manual

Model: NQVPD2JS

Inspection: 02

Date of production: see out box

**QC Pass**

**NanQue**

Wenzhou Nanque Electric Co., Ltd.

Xirendang Village, Liushi Town, Yueqing City, Wenzhou City,  
Zhejiang Province, China  
www.nanquele.com

**MADE IN CHINA**

### Matters needing attention

1. The equipment must be installed by qualified professionals.
2. Before operating the device, disconnect all power supplies and do not touch any terminal when the power supply is connected.
3. Verify that terminals are properly connected.
4. No matter whether the equipment is in normal operation, do not disassemble or repair otherwise, producers and sellersNo responsibility is accepted.
5. Do not use the equipment in places that may be corroded by gas, strong sunlight and rain.
6. Clean equipment with a dry cloth.
7. Failure to comply with these instructions will result in serious injury or serious accident.

### Product characteristics

- Microcontroller-based
- Digital display of operating voltage and current values
- Prevent the electrical set voltage is too high/too low current, three-phase asymmetry and phase sequence error
- Voltage measurement accuracy 2%
- Key setting parameter
- LED indicates overvoltage/undervoltage and overcurrent faults
- 6 modules, DIN rail mounting

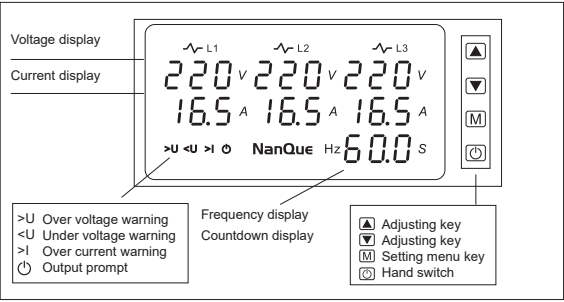
### Technical data

Parameter	Specification
Rated supply voltage	AC100-240V (L-N Per phase voltage)
Operating voltage range	AC80V - 300V
Rated frequency	40/50/60/70Hz
Lag	Overvoltage and asymmetry: 5V Undervoltage: 5V
Asymmetric delay	10s
Voltage measurement accuracy	≤2% (On the whole spectrum)
Rated insulation voltage	450V
Output contact	3NO
Electrical life	10 <sup>6</sup>
Mechanical life	10 <sup>6</sup>
Protection class	Ip20
Pollution degree	3
altitude	<2000m
Operating temperature	-5°C- 40°C
humidity	≤50% or 40°C (Condensation free)
Storage temperature	-25°C - 55°C

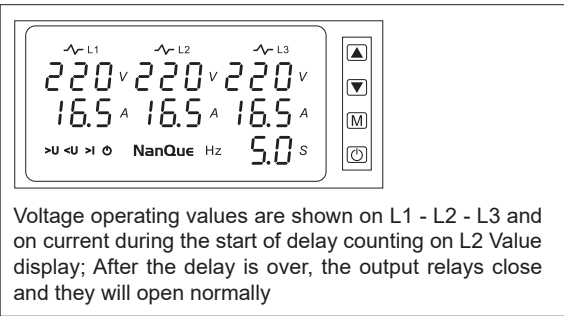
### Parameter setting

Set Code	Technical parameter	Set range	Default value	Step forward	Function description
P - 1	Power - on delay time	1s - 600s	5s	1s	The time required after the external power supply is out of is used Power on when power is restored.
P - 2	Protection recovery delay	1s - 600s	30s	1s	After voltage and current recovery, automatic reset Time required
P - 3	Overvoltage protection value	230V - 300V	270V	1V	When the voltage is above the set value. The protector will cut Broken line
P - 4	Overvoltage recovery value	225V - 295V	265V	1V	The protector will be automatic when the voltage falls below the set value Reset, and the value must be less than the overcharge Voltage protection value greater than 5V
P - 5	Under voltage protection value	90V - 210V	90V	1V	When the voltage falls below the set value, the protector will Cut the line.
P - 6	Undervoltage recovery value	95V - 215V	95V	1V	The protector will be automatic when the voltage is higher than the set value Reset, the set value must be greater than the undervoltage protection current The pressure is over 5V
P - 7	Voltage protection action delay	0.1s - 10s	0.5s	0.1s	When the voltage is below or above the set value, the protection action The time required to do it
P - 8	Three - phase voltage unbalance value	20V - 100V	50V	1V	When the error ratio between the three phase voltage is less the value deviates, the protector will cut the line
P - 9	Three - phase voltage unbalance recovery value	5V - 95V	20V	1V	When the three - phase voltage unbalance value is less than the set value, The protector will reset automatically
P10	Three - phase voltage calibration	-9.5V~9.5V	0V	1V	Correct three - phase voltage error
P11	Phase - sequence switch	On/off	ON	-	Three - phase voltage sequential protection
P12	Overcurrent protection value	1~63A/ 1~100A	63A/ 100A	1A	Protector when the current is higher than the set value will cut the line
P13	Overcurrent protection operation time	0.1s~10s	0.5s	0.1s	When the current is higher than the set value, the protection moves The time required to do it
P14	Number of continuous overcurrent protection	0~20	OFF	1	When the number of consecutive passes
P15	Three phase current error value	-9.5A~9.5A	0	1	Correct the three phase current error value

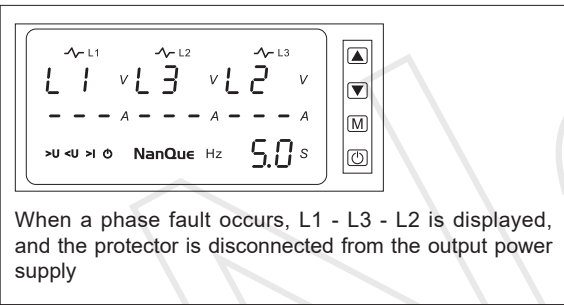
Display panel



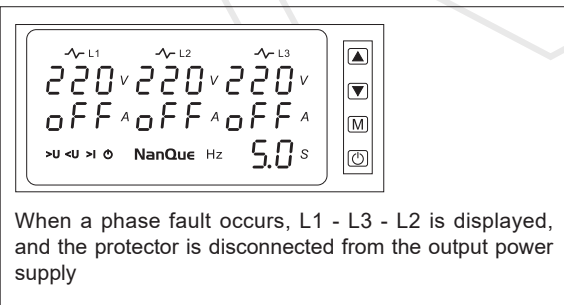
Reset/start delay display



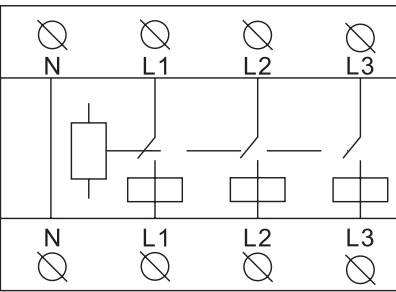
Phase sequence error indication



Phase sequence error indication



Electrical symbol

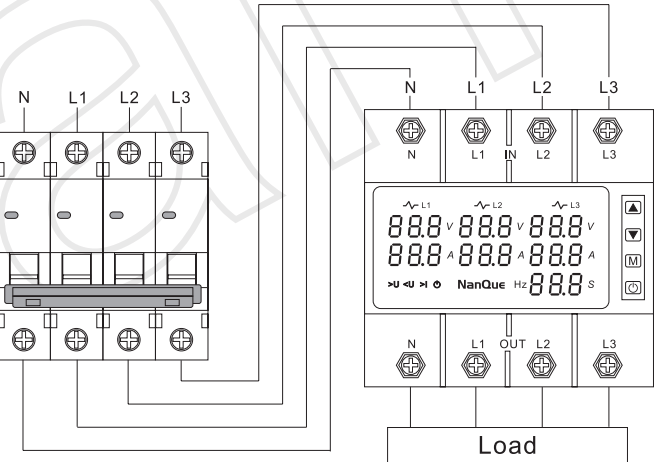


Product status statement

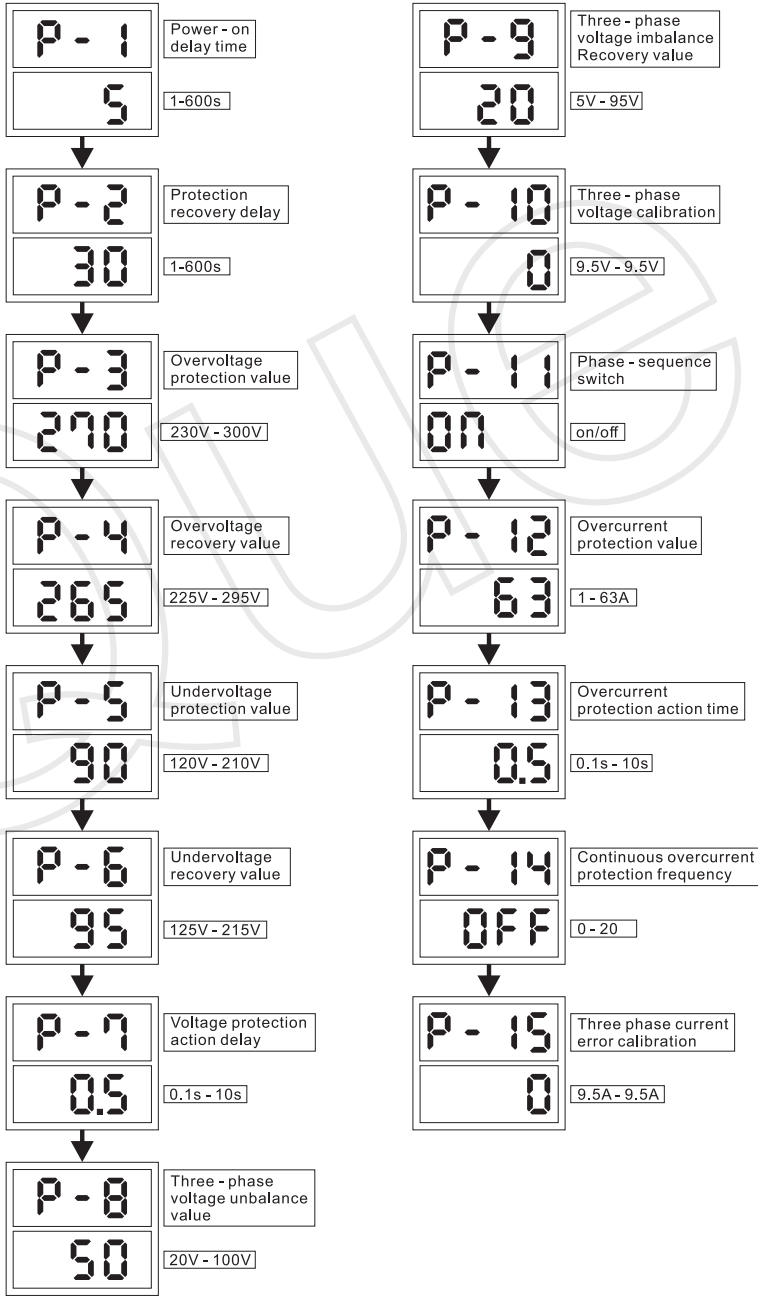
- If a voltage fault is detected during the relay's reset/start delay count, the output relay turns on and the fault indicating LED lights up.
- The operating voltage and current values will be displayed on the screen when the relay is operating normally. If a voltage or current fault is detected, the output relay turns on and the fault indication LED lights up.
- Voltage failure: If the input voltage is detected to trip back to Hys after a voltage failure; During counting the relay will automatically reset reset/start delay fault indicator light off working voltage and current value flashing screen.
- Current failure: When the relay fails due to current trip, it will reset automatically. Reset/start delay during counting, failure indicator LED off operating voltage and current value flashing on the screen.

Wiring diagram

(Wiring is for reference only, subject to the actual)



Setup menu



For example:  
**100V-127V power:**  
>V: Set the P-3 to 150 (Default 270V),  
P-4 to 145 (Default 265V)  
<V: No need to set (Suggest)

For example:  
**220V-240V power:**  
>V: No need to set  
<V: Set the P-5 to 170 (Default 90V),  
P-6 to 175 (Default 95V) (Suggest)

Restoration:  
In shutdown mode, press and hold the power button(ON/OFF ) for more than 5S to reset all parameters.